

Chainwheel Chatter

The Monthly newsletter of B.I.K.E.S. Club of Snohomish County

Your Snohomish County Cycling Club

DECEMBER 2016
VOL. 447

[Next B.I.K.E.S. Club meeting on Jan. 12th @ 7:00 pm](#)

Prez Sez...

On Nov. 12, Club Vice President Kay Peterson and I headed to the beautiful Cascade Bicycle Center for a meeting to coordinate bicycle events statewide. Cascade is trying to create resources for clubs and event organizers.

On Nov. 13, Club Secretary Cindy Proctor and I headed up to Mount Vernon to meet with officers of the Mount Baker Bicycle Club, Skagit Bike Club, and Whidbey Island Bicycle Club. Cindy had heard that the three clubs were coordinating on rides and promotions, and we asked to get in on the action.

The result is an informal North Puget Sound Bike Club Alliance in which we all agree to promote each other's events, and to host a shared "Hidden Gem" ride for the other clubs. What events should you have on your ride calendar for next year?

- McClinchy Mile, April 30
- Skagit Spring Classic, May 13
- Tour de Whidbey, Aug. 19
- Chuckanut Classic, Aug. 27

Each event offers a choice of distances. If you want a new challenge, plan to earn the "Triple Crown" – by riding three out of the four centuries available (yes, there will be prizes).

We also **need some members to volunteer to plan a ride** that shares with members of the other clubs some "hidden gems" of Snohomish County. Our tentative date to host the joint club ride is July 8. The other clubs will invite us to shared rides in June, August and September.

Lots to look forward to, despite the current cold, dark weather. Speaking of which, don't miss one of Bill Weber's lighted rides this month.

Club Year-End Party Dec. 3

So far more than 25 BIKES Club members and their families plan to join us for the year-end party on Saturday, Dec. 3. BIKES provides a holiday ham and hot coffee and tea. Members BYOB, non-alcoholic or otherwise, a potluck dish to share, and a white elephant gift.

The party starts at 6 p.m. in the Community Room at Carriage Club Mobile Home Park— 13320 Highway 99 Everett WA. There's plenty of room inside for everyone, but parking is tight, so car-pooling is encouraged.

Don't forget to bring a wrapped gift for each member /guest in your party. Bike-themed gifts are popular, but that what's-a-ma-jig from Aunt Janet always gets a laugh, too. We'll also be celebrating our top riders and ride leaders.

- A-N – Salads & Side Dishes
- O-T – Desserts
- U-Z – Appetizers

Please RSVP by Nov. 30 to president@bikesclub.org or by calling 360-658-2462.

Kristin

RIDE GUIDE

PACE

Easy	under 10 mph
Social	10–12 mph
Steady	12-14 mph
Moderate	14-16 mph
Brisk	16-18 mph
Strenuous	> 18 mph

TERRAIN

"A" Mostly flat: Flat or gentle grades only (trails, Norman Rd)

"B" Rolling: Most climbs are short and easy (Granite Falls, Kitsap)

"C" Hills: Frequent steeper and/or longer hills (Whidbey Island)

"D" Difficult: Many hills, long, steep grades (RAMROD, mt. pass)

Pace is based on speed on flat ground. Contact the Ride Leader if you are unsure whether a ride is right for you.

Pedal Pushers

B.I.K.E.S. partners with the Lynnwood Senior Center to welcome and encourage older adults to bicycling. Bring your bike if you like and we'll do minor fit and safety checks. **Lynnwood Senior Center** Wednesdays. See the [Rides calendar](#) for details.

NEWS YOU CAN USE!!

Special McClinchy Meeting Dec. 8

Members ready to do some hands-on planning and helping for the McClinchy Mile 2017 are encouraged to attend a special meeting at 6 p.m. Thursday, Dec. 8 at Cindy and Rick Proctor's house near Silver Lake.

Club will provide pizza for dinner. If it's convenient, bring a laptop. We'll be firming up event details and starting to promote McClinchy on various websites.

An RSVP is helpful for pizza purposes. Contact Cindy, secretary@bikesclub.org

Tours Planning Meeting Jan. 8

Anyone interested in planning a weekend or multi-day bicycle tour next year is invited to a coordination meeting at 2 p.m. Jan. 8 at Dan & Elaine Scott's house in Everett. The goal of the meeting is to discuss tentative dates and locations, get inspired, and avoid overlap as much as possible.

Thanks to Ride Leaders 2016

Many of the following ride leaders and club officers enjoyed a "thank you" breakfast celebration in November. All of them deserve a special pat on the back for helping to fill our social and fitness calendars in 2016. If you'd like to become a ride leader, we plan to host an orientation and roundtable in February. Meanwhile, give these folks some kudos.

Warren	Bare	Bill	Lutterloh
Bob	Biesiedzinski	Jack	McClinchy
Viv	Biesiedzinski	Bob	Nyberg
John	Carlin	Genadi	Osowiecki
Mike	Dahlstrom	Kay	Peterson
Clarence	Elstad	Rick	Proctor
Pier	Fiorentini	Cindy	Proctor
Cheryl	Funkhouser	Janell	Reich
Mary Jo	Gerst	Mason	Rutledge
Nancy	Graham	Elaine	Scott
Debby	Grant	Dan	Scott
Raquel	Haunreiter	Bette-Ann	Shroyer
Linda	Hunter	Bill	Weber
Brent	Hunter	Allyson	Welsh
Kristin	Kinnamon	Jack	Willis
Kristi	Knodell	Tim	Wise
Fred	Koch	Santa	Claus

B.I.K.E.S.-Membership P.O. Box 5242, Everett WA 98206

Name _____

Address _____

City _____ State _____ Zip _____

Telephone (____) _____ - _____ Email _____

Membership **\$20 Annual (INDIVIDUAL)** **New Member**

DUES **\$25 Annually (FAMILY)** **Renewal**

Member benefits: 10% discount at local bike shops with your member card (see website for list), low-cost bike box and trailer rentals, Frequent Rider Club, monthly newsletter, social and advocacy activities.

November Rides: Weekends & Weekdays

WEEKEND RIDES

Sunday December 4th

[BIKES Party Recovery Ride](#)

Start at 10:00 from Rotary Park-gravel parking lot. Steady pace, 25 mile loop through the valley, Snohomish, and Everett. A terrain, heavy rain/light snow cancels. Food stop. <http://ridewithgps.com/routes/6276701>. Ride leader Dan Scott 425-501-6198

Sunday December 18th

[Shopping Recovery Ride](#)

Start at 10:30 from McCollum Park (by swimming pool). Steady pace, 22 miles, A with a couple of small hills, uses streets and Interurban Trail. Food stop likely. Heavy rain/freezy stuff cancels. <https://ridewithgps.com/routes/6539457> NOTE: start location different from map link. Ride leader Dan Scott 425-501-6198

Sunday December 18th

[Decorated Bike Ride](#)

Meet at the Northeast corner of Garfield Park in Everett (2 blocks East of Walnut on 23rd Street) for a 5:00 pm start. Light your bike, tinsel yourself, or grow a tree on your rack. It's time for a Christmas light viewing ride around Everett. A 5-10 mile leisurely ride around town. This is a night ride, headlight and taillight required, decorations are optional (but fun). Snow, ice and/or heavy rain will postpone, watch ride changes page for updates. Ride leader Bill Weber 425- 327-3516 email bbweberwa@comcast.net.



We're on the web at
www.bikesclub.org

WEEKDAY RIDES

Tuesdays December 6th, 13th, 20th, 27th

[Tuesday Moderate Ride](#)

Meet at Silver Lake Bicycle Centre for an 11am start. Moderate pace group (14 – 16 mph) 20 or so miles, A/B terrain. Loop ride routes vary. Mid-ride break with optional lunch and/or coffee after the ride. Ride leader Rick Proctor 425-293-3153. Ice, snow, or steady rain cancels. Check the Rides Updates page or call/text if in doubt.

Tuesdays December 13th, 20th, 27th

[Tuesday Social Paced Ride \(NEW times/route/mileage\)](#)

New change for the Tuesday social paced ride. Meet at Bicycle Centre Silver Lake, at 10:30, but we will do a longer route (no longer stopping at noon at the bike shop for a 2nd loop). Mileage will vary between 20-24 miles, A and B terrain in the Mill Creek area. We will still meet for lunch/coffee after the ride at approximately 1:00 pm, varying locations. Expected pace to be between 10-12 mph, and you should have a bike in good working order. Even though "social paced" this is not a "beginner" ride, as we do quite a bit of elevation gain on this route - usually over 1000 feet. Rain or icy weather will cancel, be sure to check ride updates. Rider leader Cindy Proctor. 425-293-3152.

Thursday December 15th

[McCollum – Mukilteo – Everett Loop](#)

Meet at McCollum Park west parking lot for a 10am start. Loop ride through Harbour Point, Mukilteo, and Everett. Coffee / lunch along the Everett waterfront. 33 miles, moderate pace (14 – 16 mph), A & B terrain with 1,800 feet of elevation gain. Ride leader Rick Proctor 425-293-3153. Ice, snow or steady rain cancels. Check the Ride Updates page or call/text if in doubt.

Friday December 15th

[Decorated Bike Ride](#)

Meet at the Northeast corner of Garfield Park in Everett (2 blocks East of Walnut on 23rd Street) for a 6:30pm start. Light your bike, tinsel yourself, or grow a tree on your rack. It's time for a Christmas light viewing ride around Everett. A 5-10 mile leisurely ride around town. This is a night ride, headlight and taillight required, decorations are optional (but fun). Snow, ice and/or heavy rain will postpone, watch ride changes page for updates. Ride leader Bill Weber 425- 327-3516 email bbweberwa@comcast.net.

Thursday December 22nd

[Giro di Sentieri](#)

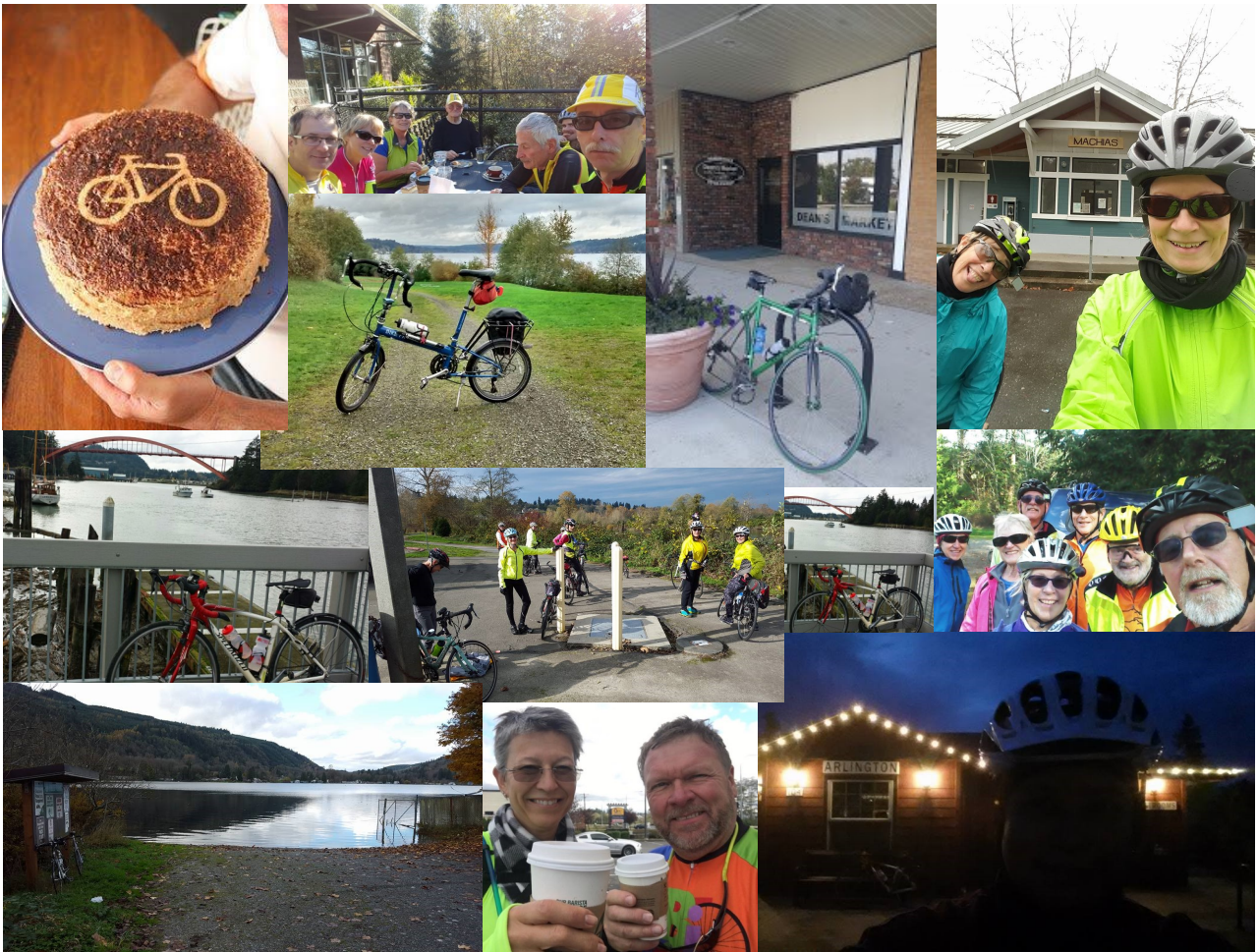
Meet at McCollum Park west parking lot for a 10am start. Loop ride including sections of the Interurban, Burke-Gilman, Sammamish River, and North Creek trails and interconnecting streets. Coffee, lunch, and rest stops expected. 34 miles, moderate pace (14 – 16 mph), A & B terrain with 1,600 feet of elevation gain. Ride leader Rick Proctor 425-293-3153. Ice, snow, or steady rain cancels, check the Rides Updates page or call/text if in doubt.

Thursday December 29th

[North Seattle Parks Loop](#)

Meet at Shoreline Park & Ride (Aurora Ave N & N 192nd St) south parking lot for a 10am start. Loop ride on trails and streets near Puget Sound through Golden Gardens, Chittenden Locks, Discovery Park, Gas Works Park, UW, Ravenna Park, Green Lake, and Greenwood Park. We will walk the bikes through Chittenden Locks area (1/2 mile). We will forage for coffee / lunch along the way. 36 miles, moderate pace (14 – 16 mph), A & B terrain with 1,800 feet of elevation gain. Ride leader Rick Proctor 425-293-3153. Ice, snow or steady rain cancels. Check the Ride Updates page or call/text if in doubt.

Ride Pics from the B.I.K.E.S. Club Members!



November had many great rides! Thank you to all who posted photos of what we love to do...RIDE OUR B.I.K.E.S.!

If you would like to see your pictures in the newsletter you can send them directly to editor@bikesclub.org or post them on the club Facebook Page!

Facebook!

Club members -- join [BIKES' Facebook group](#). We've set the page up to share photos, ride reviews, bike or travel discussions, etc. Thanks to Dan Scott for managing our page, and to the many members who contribute interesting posts.



[Check the Road Condition Before You Go!](#)

[Snohomish County Roads Central Updates](#)

[WSDOT Weekly Snohomish County Roads Weekly Update](#)





Club Member Rider Miles Estimate Only



Rick	Proctor	3131	Jean	Henderson	380	Stephen	Fox	70
Bob	Nyberg	2553	Joanne	Kennedy	366	Jim	Brandley	69
Pier	Fiorentini	2284	Larry	Kennedy	366	Dick	Nicholson	69
Dan	Scott	1893	Bob	Biesiedzinski	347	Kay	Peterson	69
Robert	Pahlman	1768	Vivian	Biesiedzinski	347	Bob	Palm	67
Cindy	Proctor	1768	Mike	Dahlstrom	331	Rajie	Barclay	61
Debbie	Kawamoto	1618	Mason	Rutledge	330	Jim	Stewart	61
Fred	Koch	1456	Marietta	Zander	314	Susan	Hausmann	59
Bill	Paul	1399	Kathy	Riddle	304	Brent	Hunter	58
Marcia	Stedman	1165	Matt	Petersen	288	Kenneth	Tang	57
Gary	Broughton	1039	Bernice	Tannenbaum	268	Don	Martin	48
Cheryl	Funkhouser	1028	Jack	Turner	267	John	DeNinno	45
Jack	Willis	901	Jan	Johnson	253	Rena	Peterson	44
Steve	Linari	888	Kristin	Kinnamon	253	Tom	Weber	44
Bette-Ann	Shroyer	869	Linda	Hunter	244	Judy	Brackett	42
Elaine	Scott	789	Tim	Wise	212	Steven	Hudspeth	42
Kala	Koch	784	Shirley	Slade	211	Craig	Cameron	41
Ron	Andersen	773	Sean	Wilson	203	Philip	Gay	41
MJ	Gerst	772	Dorothy	Lindstrom	189	John	Reno	41
Rick	Poffenroth	711	Gloria	Hammond	187	Jim	Gillan	38
Bill	Lutterloh	699	Diane	Gordon	174	Evelyn	Rayburn	37
Nancy	Graham	683	Leslie	Strickland	167	Frosene	Saco	35
Mark	Olson	643	Juanita	Pias	149	Gabriel	Rinkes	30
Clarence	Elstad	601	Pete	Pias	149	Chris	Clougherty	26
Brenda	Ferguson	591	Henriette	Klauser	140	Judi	Chadwick	25
Judy	Lang	590	Bill	Weber	137	Tone	Hutton	24
Allyson	Welsh	585	Gerald	Bernstein	133	Becky	Brindle	22
Ken	Winknwider	508	Gery	Osowiecki	120	Pam	Hallanger	21
Rick	Krochalis	498	Kristi	Knodell	116	Rick	Barclay	17
Raquel	Haunreiter	489	Tom	Crisp	111	Robert	Smith	17
Mitch	Pico	482	Kurt	Haunreiter	108	Jim	Shaw	14
Libby	Krochalis	472	Bernice	Tannenbaum	97	Eva	Clougherty	12
John	Carlin	459	Adrienne	Dorf	87	Greg	Wilson	12
Bobbie	Laue	413	Alec	Kutchma	80	Linda	Wilson	12
Warren	Bare	398	Audrae	Coury	76	Michele	Wolski	12
Debby	Grant	385	Stephen	Fox	70	Moe	Moosavi	11